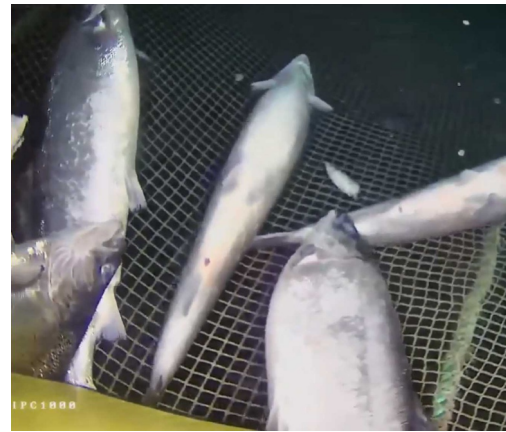
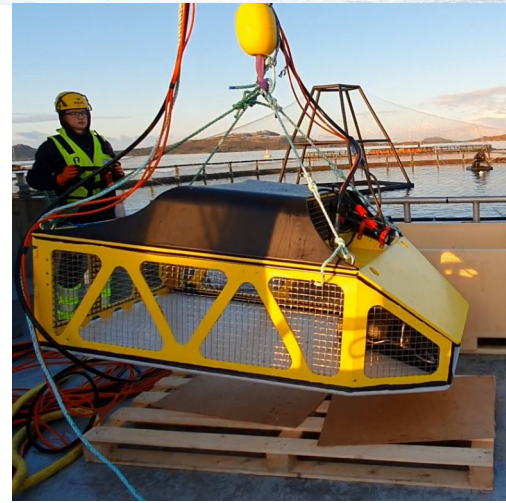




MEOX MAMAR-Y

Mortality remover



- Brand new system
- Remove fish mortality efficiently
- Easy Control via joy stick and camera
- ROV functionality on bottom of net
- Lower to bottom, drive around, suck up dead fish.....
-lift up and empty Mamar-Y internal basket...
- Optional, suck up directly to surface by pump

Disease outbreaks and unexplained deaths may occur in fish farms. Any dead fish should be removed as body will quickly rot especially in warm water. A corpse pollute water, risking the health of other fish in the cage. If it died from disease, the last thing you want is other fish consuming its body parts, so remove immediately.

Remove of dead fish is not only a precaution against spread of disease. Another reason is that dead fish attack undesirable animals to the vicinity of the cage farm. Seals, spiny dogfish and other animals may go to attack and attempt to eat dead fish as may result hole in the net.

By using a Meox Mamar-Y you can drive around on the bottom and suck up dead fish and perform a net inspection at the same time. This is a very quick, efficient, and easy way of collecting dead fish and keep you cage clean.



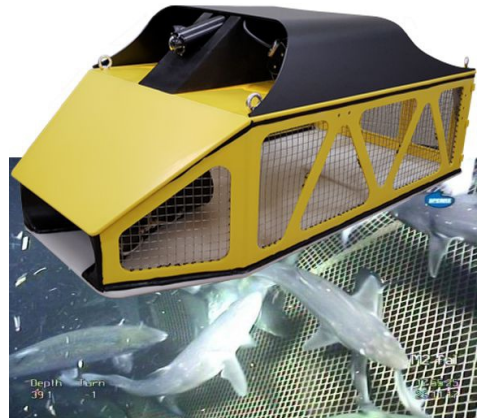
SPEC

BxHxD: 190x100x50
 Working depth: <50m
 Material frame: 316, PE
 Floats: Passive floats
 Weight: 165kg
 Capacity: normal 120kg (check for model)
 Water pressure: 140-160bar
 Max pressure: 200bar
 Water flow: 30-40L

Camera: Standard cam :IP 3MP
 Light: standard 3000lux
 Power: 230VAC 3phase, 16/32A, option 1
 230VAC 1phase, 32A (16A), option 2
 Com: RS-485 50m
 Video: RS-485, Meox data cable, compressed prot.
 Water: 0.5" flexi hose, std 50m
 Thruster: 2 pc 2.2kW 230V, max 4,4kW
 normal usage typically 1-3kW

Controls: Meox, via consol
 Screens: 1 for video, PC or split by NVR SW,
 Recording on NVR, std 1TB HD, optional
 PC or NVR Meox

Control Cabinet: 2pc 230VAC 3ph or 1ph 2.2kW controls with
 Meox electronic master



Mamar-Y control
Complete w/screen



Mamar-Y control



Mamar-Y EI

